



MODEL 40 AMETEK

PNEUMATIC PRESSURE CONTROLLER CONTROL MODE PI (Proportional + Reset)

The Model 40 Pneumatic Pressure Controller automatically positions a valve or final control element to maintain process pressure at the desired setpoint. Unit includes a control mode of 2 to 200% proportional band with reset for processes with frequent pressure variations.

FEATURES

- Steady state air consumption, 0.1 SCFM at 9 psig output.
- Indication of measured variable.
- Easy field calibration.
- Fast stable response from a low bleed, high capacity relay.
- Large easy-to-read black numbers and graduations on white dial.

SPECIFICATIONS

Case: Cast aluminum with dust ledge and weather-proof gasket. Semi-flat black powdered epoxy finish.

Connections: 1/4" NPT female back connections.

Mounting: Slotted "L" brackets for panel mounting.

Measuring Element:

Type	Material	Sensing Element Range psig
Bourdon Tube	Phos. Bronze	0-60
		0-100
		0-300
Diaphragm	316SST	0-100
	Ni-Span C	3-15

Process Indications: Process pointer on 3-1/2" precision gauge dial (7" scale length).

Set Point Adjustment: By means of knob inside case.

Proportional Band Adjustment: Adjustable between 2 and 200%.

Reset: Adjustable settings from 0.03 to 5.0 minutes per repeat.

Action: Field adjustable; inside case. Direct or reverse. Standard instrument supplied with reverse action.

Common Applications	Action	
	Control Valve	Controller
Pressure Relief	ATC-FO	Reverse
Pressure Reducing	ATO-FC	Reverse

Fixed Orifice: Sapphire with integral pushbutton clean out.

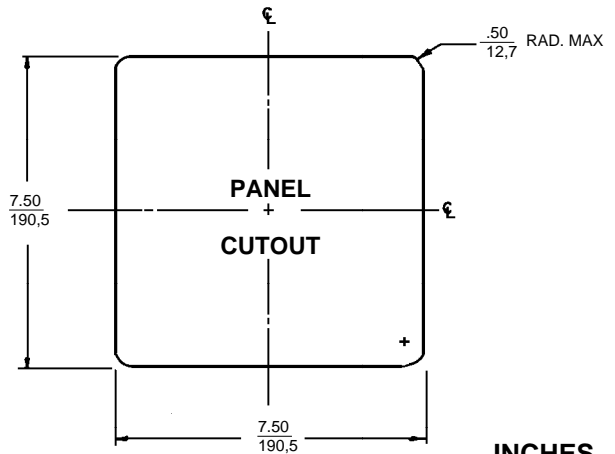
Relays: Steady state bleed rate of less than 0.1 SCFM at 9 psig (.63 Barg) output with the capacity to deliver over 3.0 SCFM result in an exceptionally stable and fast responding controller. Easily dismantled for cleaning without disturbing factory set adjustments.

Indication Accuracy: 1% middle half of scale, 1-1/2% balance of scale.

Sensitivity: Less than 0.1% of full scale at 100% proportional band.

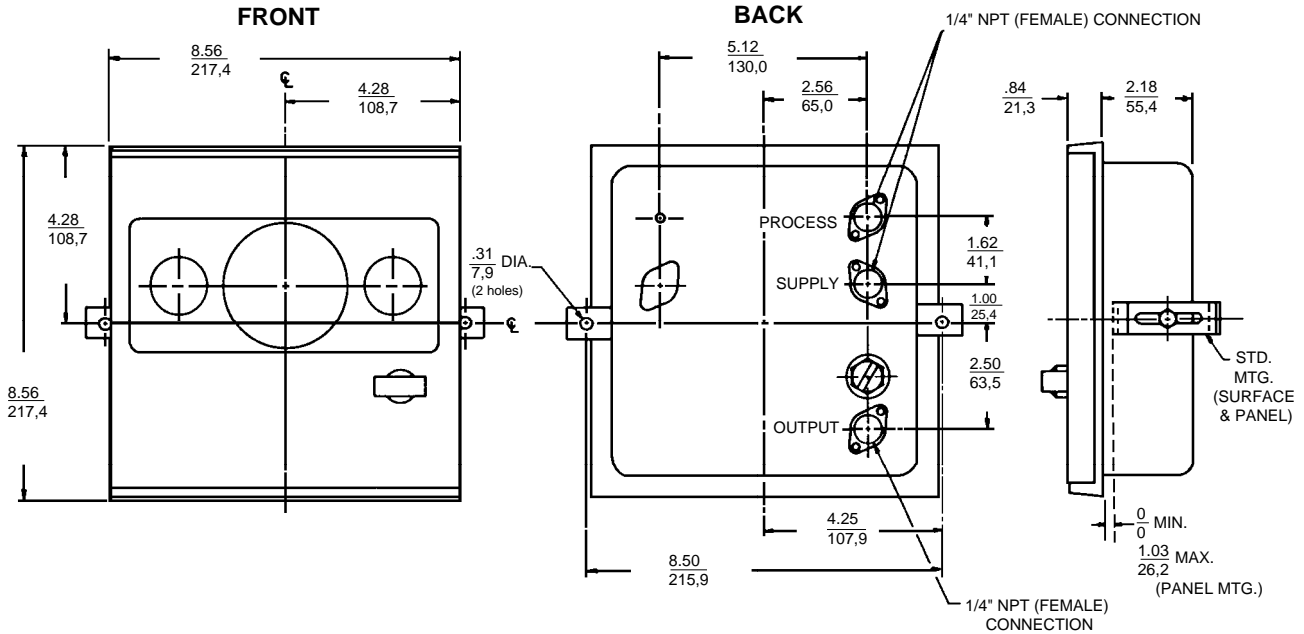
Air Supply: 20 psig (1.4 Barg) supply for 3-15 psig (.21-1.05 Barg) output. Oil free, desiccant dried source required. An airset with filter and dripwell are recommended ahead of each controller.

Gauges: Supply and Output dual reading 0-30 psig (0-2.1 Barg).



DIMENSIONS

**INCHES
MM**



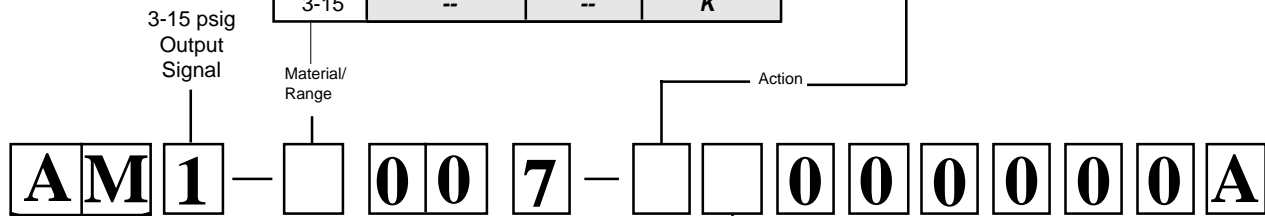
PRODUCT CODE

TABLE 1

Range psig	SENSING ELEMENT		
	MATERIAL		
	Phos. Bronze	316SST	Ni-Span C
0-60	5	--	--
0-100	7	8	--
0-300	C	--	--
3-15	--	--	K

TABLE 2

CONTROL ACTION	CODE
Reverse	R
Direct	D



**MODEL 40 PNEUMATIC
PRESSURE CONTROLLER**

TABLE 3

UNMOUNTED AIRSET (SHPD LOOSE)	
Descriptions	CODE
No Airset	0
5100P Air Filter Regulator, 0-30 psig	A

Cashco, Inc.
P.O. Box 6
Ellsworth, KS 67439-0006
PH (785) 472-4461
FAX (785) 472-3539
E-mail: sales@cashco.com
exportsales@cashco.com
Printed in U.S.A. Model 40-TB

@GS @DIM @PCM