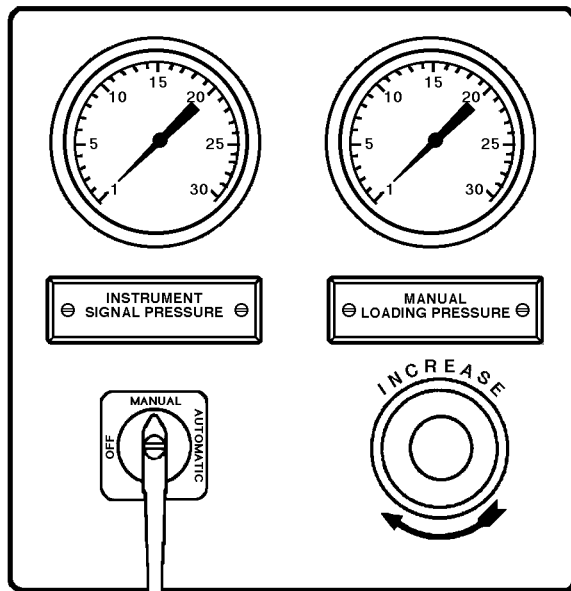




MODEL 5486

PNEUMATIC PRESSURE LOADING STATION with SWITCHOVER VALVE

Model 5486 is a manual loader station with integral 3-way MAN-OFF-AUTO switchover valve used for selecting if the pneumatic output is "manually" developed from the manual loading airset, or is "automatically" developed from a pneumatic controller. Is most frequently used as an output to a pneumatic control valve, with or without a pneumatic positioner (P/P).



Model 5486

FEATURES

- 2-1/2" output pressure gauge; compound psig/kPaG (std).
- Panel or bracket mountable (bracket to be field-fabricated).
- Output pressure control adjustment knob.
- 3-way switchover valve with lever handle operator.
- Easy reading indicator plates.

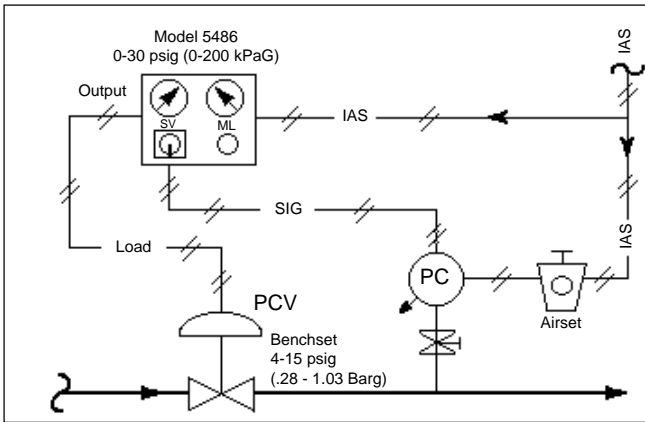
MATERIALS OF CONSTRUCTION

Baseplate:	Die-cast aluminum.
Gauge Case:	SST.
Airset:	Primarily aluminum; see 5100P-TB for full information.
Knob:	Hard, black plastic.
Paint:	Black enamel.
Tubing:	Copper.
Tube Fittings:	Brass.
Indication Plates:	Black-white phenolic plastic.
Selector Valve:	Brass.

APPLICATIONS

ONLY instrument quality air should be used with Model 5486.

May be used for in-service removal/calibration of field instrument controller while manually controlling output simultaneously via manual loading airset. Primarily utilized in conjunction with field controller that does not contain MAN-OFF-AUTO feature internally.

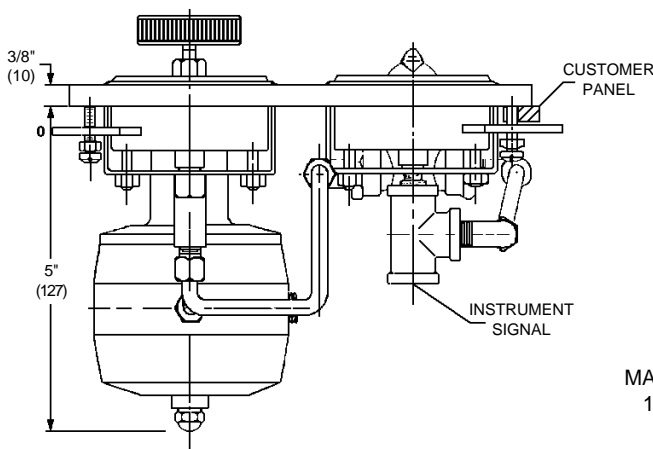


SIG = Signal
 LOAD = Output to Actuator
 ML = Manual Loader
 SV = Selector Valve
 PC = Pressure Controller
 PCV = Pressure Control Valve
 IAS = Instrument Air Supply

Selector Valve Positioner	Output Path
MAN	IAS-ML-SV-PCV
OFF	None*
AUTO	IAS-PC-SV-PCV

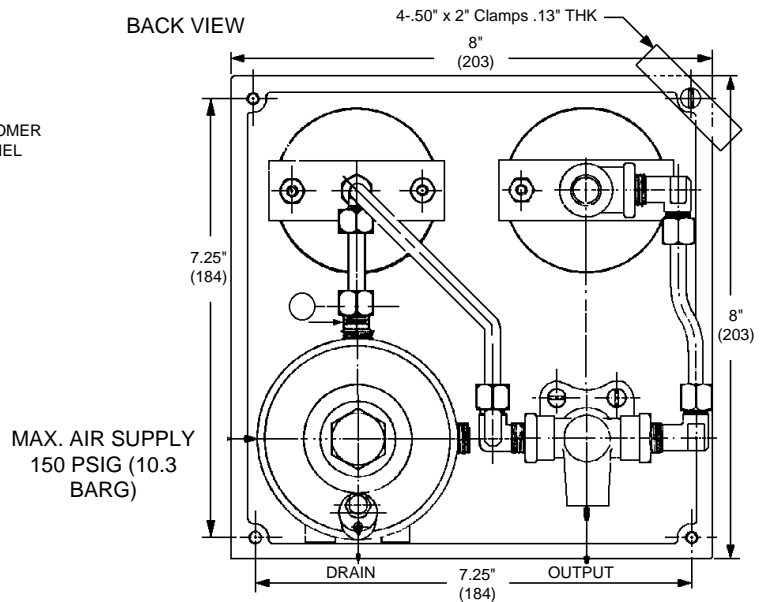
* If pressurized as selector valve is moved to position "OFF", SIG is trapped (locked) for a control valve without positioner; if a P/P positioner is applied, trapped air may bleed-off thru positioner.

TOP VIEW



NOTE: PANEL CUTOUT TO BE 7-1/2" x 7-1/2" (191 x 191)
 WEIGHT IS APPROXIMATELY 5 LBS (2.27 kg)

BACK VIEW



ALL DIMENSIONS IN INCHES WITH mm in ().

PRODUCT CODE 08/20/99

56 0-0007-0 00000000A

TABLE 1

PRESSURE GAUGES	
STANDARD DUAL DIAL INDICATOR	CODE
0 - 30 psig / 0 - 200 kPa	4
0 - 60 psig / 0 - 400 kPa	5
SPECIAL DUAL DIAL INDICATOR	
0 - 30 psig / 0 - 2 Bar	A
0 - 60 psig / 0 - 4 Bar	B
0 - 30 psig / 0 - 2.1 Kg cm ²	1
0 - 60 psig / 0 - 4.2 Kg cm ²	2

MODEL "5486" MANUAL-AUTO PNEUMATIC LOADER, DOUBLE GAUGE, (W>Loading & Instrument Signal Gauge, 3-Way Valve)

Cashco, Inc.
 P.O. Box 6
 Ellsworth, KS 67439-0006
 PH (785) 472-4461
 Fax. # (785) 472-3539
 E-mail: Sales@Cashco.com
 Exportsales@Cashco.com
 Printed in U.S.A. Model 5486-TB