

Model 9540L Mounted on
Cashco Chemical Valve

MODEL 9540L

PNEUMATIC POSITIONER FOR LINEAR VALVES

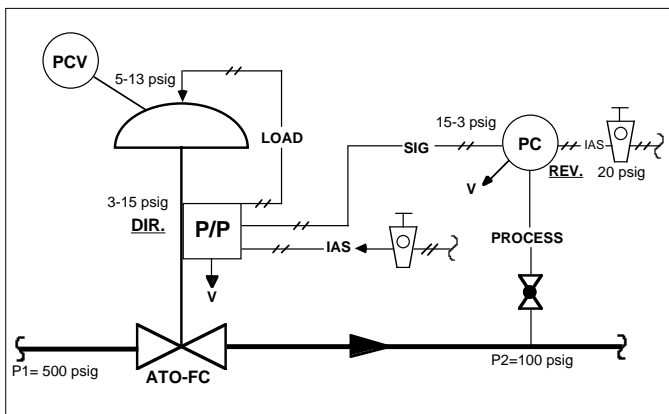
Model 9540L is a single acting, compact, force-balance positioner. This positioner is utilized to linearize the relationship between valve stem position and the system's control signal, and to precisely position the valve stem. An internal 2-gauge cluster indicating input signal and output loading pressures is standard with this positioner.

FEATURES

- Adjustable gain.
- Adjustable stroking speed.
- Direct or reverse action with simple field reversibility.
- Easy change to split range operation.
- Corrosion resistant SST hardware.
- Two pressure gauges standard.
- High capacity relay.
- Negligible effects from vibration.
- Built-in bypass.

APPLICATIONS

Cashco Chemical Valve, Model 520 TFE, Model 521 TFE, Model 964 and 2" size Model 2266 linear travelling stem control valves.



Typical Pressure Reducing Pneumatic Control Loop - PCV
with P/P Positioner

MODEL 9540L

P/P POSITIONER - LINEAR

SPECIFICATIONS

Input Signal: 3-15 psig standard.
 Split ranges:
 2-way — 3-9 or 9-15 psig.
 3-way — 3-7, 7-11 or 11-15 psig.

Supply Pressure:

Max. Supply Pressure (psig)	Bench Set Maximum Value
20	Up to 15 psig
35	From 16 to 30 psig

NOTE: Requires oil-free, desiccant-dried, instrument quality, compressed air.

Hysteresis: ≤0.5% of span.
Linearity: ≤ ±1.0% of span.
Sensitivity: ≤ 0.1% of span.
Operating Influence (Supply Pressure): ≤ 0.135% stroke change per one psi change in supply pressure.

Open Loop Gain:

Supply Pressure (psig)	Adjustable Range
20	150:1
35	125:1

Ambient Temperature: -40 to +175°F
Temperature Effect: ≤0.017% stroke change per °F ambient temperature change.

Relative Humidity: ≤100%.
Vibration Effect: Immune up to 100 Hz and four g's in any direction.

Air Consumption:

Supply Pressure (psig)	Air Requirement, SCFH	
	Steady State Consumption	Maximum Output @ Maximum Deviation ¹
20	7.1	95
35	9.8	137

¹ At maximum gain

Stroking Time: See Technical Bulletin STKSP-TB.
Materials: *Cover* - Impact resistant polyester with clear plastic gauge window.
Baseplate, Housing, and Connection Manifold - Aluminum with polyurethane paint.
External Linkage and Bolting - SST.

Connections: 1/4" NPT female.
Gauges: Two - one input signal, one output load. Internally mounted under cover, viewed thru window. SST case, dual scales in PSIG and BARG.

Valve Stem Travel: 7/16" to 1-1/8".

