

MODEL HP

PRESSURE REDUCING REGULATOR

SECTION I

I. DESCRIPTION AND SCOPE

The Model HP is a heavy duty, high pressure reducing regulator used to control downstream (outlet or P₂) pressure. Sizes are 1/2", 3/4", 1" and 1-1/2" (DN15, 20, 25 and 40). With proper trim utilization, the unit is suitable for liquid and gaseous service. Refer to Technical Bulletin HP-TB for design conditions and selection recommendations. **NOT FOR STEAM SERVICE.**

SECTION II

II. INSTALLATION



CAUTION

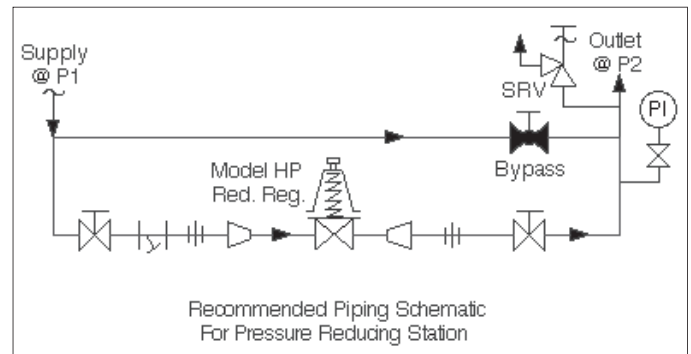
Installation of adequate overpressure protection is recommended to protect the regulator from overpressure and all downstream equipment from damage in the event of regulator failure.



CAUTION

For welded installations, all internal trim parts, seals and diaphragm(s) must be removed from regulator body prior to welding into pipeline. The heat of fusion welding will damage non-metallic parts if not removed. **NOTE: This does not apply to units equipped with extended pipe nipples.**

1. An inlet block valve should always be installed.
2. If service application is continuous such that shutdown is not readily accomplished, it is recommended that an inlet block valve, outlet block valve, and a manual bypass valve be installed.
3. Pipe unions should be installed to allow removal from piping.
4. An outlet pressure gauge should be located approximately ten pipe diameters downstream, and within sight.
5. All installations should include a downstream relief device if the inlet pressure could exceed the pressure rating of any downstream equipment or the maximum outlet pressure rating of the unit.



6. Clean the piping of all foreign material including chips, welding scale, oil, grease and dirt before installing the regulator. Strainers are recommended.
7. In placing thread sealant on pipe ends prior to engagement, ensure that excess material is removed and not allowed to enter the regulator upon startup.
8. Flow Direction: Install so the flow direction matches the arrow cast on the main regulator body.
9. Basic Regulator - (Refer to Figure 1): Regulator may be rotated around the pipe axis 360°. Recommended position is with spring chamber vertical upwards. Orient such that the spring chamber vent hole does not collect rainwater or debris.
10. Regulators are not to be direct buried underground.
11. For insulated piping systems, recommendation is to not insulate regulator.

SECTION III

III. PRINCIPLE OF OPERATION

1. Movement occurs as pressure variations register on the diaphragm. The registering pressure is the outlet, P_2 , or downstream pressure. The range spring opposes diaphragm movement. As outlet pressure drops, the range spring pushes the diaphragm down, opening the port; as outlet pressure increases, the diaphragm pushes up and the port opening closes.
2. A complete diaphragm failure will cause the regulator to fail open.



CAUTION

The maximum outlet pressure is listed on the nameplate as the upper range spring pressure level, and is the recommended "upper operative limit" for the sensing diaphragm. Higher pressures could damage the diaphragm. Refer to HP-TB, Table 5, for "emergency over-pressure level". NOTE: Inlet pressure and outlet pressure ratings are at different levels. (Field hydrostatic tests frequently destroy diaphragms. DO NOT HYDROSTATIC TEST THROUGH AN INSTALLED UNIT; ISOLATE FROM TEST.)

SECTION IV

* **NOTE:** Systems sequencing operations at startup, normal operation, failure mode(s), and shutdown must assure that the pressure (P_{Load}) on the spring chamber does not exceed the pressure registering on the wetted side of the diaphragm. Should this "pressure reversal" occur, particularly to metal diaphragms, the diaphragm may be permanently damaged and cause improper operation.

$$P_1 > P_2 > P_{Load}$$

Pressure reversal is normally caused by the inlet pressure to a regulator being interrupted (automatically or manually).

IV. STARTUP

1. Start with the block valves closed. A bypass valve may be used to maintain outlet pressure in the downstream system without changing the following steps.
2. Relax the range spring by turning the adjusting screw counter clockwise (CCW) a minimum of three (3) full revolutions. This reduces the outlet (downstream) pressure set point.
3. If it is a "hot" piping system, and equipped with a bypass valve, slowly open the bypass valve to pre-heat the system piping and to allow slow expansion of the piping. Closely monitor outlet (downstream) pressure via gauge to ensure not over-pressurizing. **NOTE:** If no bypass valve is installed, extra caution should be used in starting up a cold system; i.e. do everything slowly.
4. Crack open the outlet (downstream) block valve.
5. Slowly open the inlet (upstream) block valve observing the outlet (downstream) pressure gauge. Determine if the regulator is flowing. If not, slowly rotate the regulator adjusting screw clockwise (CW) until flow begins.
6. Continue to slowly open the inlet (upstream) block valve until fully open.
7. Continue to slowly open the outlet (downstream) block valve, especially when the downstream piping system isn't pressurized. If the outlet (downstream) pressure exceeds the desired pressure, close the block valve and go to Step 2, then return to Step 4.
8. When flow is established steady enough that the outlet (downstream) block valve is fully open, begin to slowly close the bypass valve if installed.
9. Develop system flow to a level near its expected normal rate, and reset the regulator set point by turning the adjusting screw CW to increase outlet pressure, or CCW to reduce outlet pressure.
10. Reduce system flow to a minimum level and observe set point. Outlet pressure will rise from the set point of Step 9. The maximum rise in outlet pressure on decreasing flow should not exceed the stated upper limit of the range spring by greater than 10%; i.e. 400–750 psig (27.5 –51.7 Barg) range spring, at low flow the outlet pressure should not exceed 825 psig (56.8 Barg), if it does, consult factory.

SECTION V

V. SHUTDOWN

1. On systems with a bypass valve, and where system pressure is to be maintained as the regulator is shut down, slowly open the bypass valve while closing the inlet (upstream) block valve. Fully close the inlet (upstream) block valve. (When on bypass, the system pressure must be constantly observed and manually regulated. Close the outlet (downstream) block valve.



CAUTION

Do not walk away and leave a bypassed regulator unattended.

2. If the regulator and system are to both be shut down, slowly close the inlet (upstream) block valve. Close the outlet (downstream) valve only if regulator removal is required.

SECTION VI

VI. MAINTENANCE



WARNING

SYSTEM UNDER PRESSURE. Prior to performing any maintenance, isolate the regulator from the system and relieve all pressure. Failure to do so could result in personal injury.

A. General:

1. Maintenance procedures hereinafter are based upon removal of the regulator unit from the pipeline where installed.
2. Owner should refer to owner's procedures for removal, handling, cleaning and disposal of nonreusable parts, i.e. gaskets, etc.
3. Refer to Figure 1 for the basic regulator and Figure 2 for a blowup of the balanced trim.

B. Diaphragm Replacement:

1. Securely install the body (1) in a vise with the spring chamber (2) directed upwards.



WARNING

SPRING UNDER COMPRESSION. Prior to removing diaphragm flange bolts, relieve spring compression by backing out the adjusting screw. Failure to do so may result in flying parts that could cause personal injury.

2. Relax range spring (14) by turning adjusting screw (6) CCW until removed from spring chamber (2).
3. Draw or embed a match mark between body casting (1) and spring chamber casting (2) along flanged area.
4. Remove all diaphragm flange nuts (9) and bolts (8, 23).
5. Remove spring chamber (2), range spring (14), spring button (4), pressure plate (3), diaphragm(s) (12), and diaphragm gasket (13), for metal diaphragm (no diaphragm gasket (13) for composition diaphragm). **NOTE:** For units with spring ranges 120-225 psig (8.27 - 15.5 Barg) and higher, also remove the thrust bearing (21) and bearing washer (22).
6. Remove pusher plate (11) and inspect for a fit which limits its travel to a vertical direction. Wear will show as excessive wobble in pusher plate

(11). If apparent, recommend trim removal and inspection; go to Sub-section C or D following. Reinstall pusher plate (11).

7. Inspect pressure plate (3) to ensure no deformation due to over-pressurization. If deformed, replace.
8. Clean body (1) and diaphragm flange. **NOTE:** On regulators originally supplied as "oxygen clean", Option-55, maintenance must include a level of cleanliness equal to Cashco's cleaning standard #S-1134. Contact factory for details.
9. Place diaphragm gasket (13) on body (1) flange. Position diaphragm(s) (12) into place. **NOTE:** Refer to the quantity of diaphragms (12) incorporated in the bill of materials listing. Depending on the outlet pressure level; multiple metal diaphragms may be "stacked". Visually center pressure plate (3) on diaphragm(s) (12), and set range spring (14) onto retainer hub of pressure plate (3).
10. Place multi-purpose, high temperature grease into depression of spring button (4) where adjusting screw bears. Set spring button (4) onto range spring (14); ensure spring button is laying flat. **NOTE:** For units with range springs 120-225 psig (8.27-15.5 Barg) and higher, position spring button (4), thrust bearing (21) and bearing washer (22) on top of range spring (14).
11. Aligning matchmarks, place spring chamber (2) over the above stacked parts. Install all bolts (8), (23) and nuts (9) by hand tightening. Mechanically tightening bolting in a cross pattern that allows spring chamber (2) to be pulled down evenly. Recommended torque values are as follows:

Regulator Size	Bolt Size	Metal Diaph.	Comp. Diaph.
1/2", 3/4" & 1" (DN15, 20 & 25)	3/8-24	30 Ft-lbs	25 Ft-lbs
1-1/2" (DN40)	7/16-20	50 Ft-lbs	30 Ft-lbs

NOTE: Never replace bolting (8 & 9) (23) with just any bolting if lost. Bolt heads and nuts are marked with specification identification markings. Use only proper grades as replacements.

12. Reinstall adjusting screw (6) with locknut (7).
13. Pressurize with air and soap solution test around bolting (8 & 9) (23), body (1) and spring chamber (2) for leakage. Ensure that an outlet pressure is maintained during this leak test of at least mid-range spring level; i.e. 120-255 psig (8.27-15.5 Barg) range spring, 173 psig (11.9 Barg) test pressure minimum.

C. Trim Replacement (For Metal Seated Units):

1. Install body (1) in a vise with the body cap (5) on top and the body (1) flange downwards.
2. Loosen body cap (5) with a hex head wrench with a lever length of at least 15 inches (381 mm). The wrench should be rapped with a hammer to loosen. Remove body cap (5).
3. Remove piston spring (17), and piston (15.1) and cylinder (15.2). Inspect parts for excessive wear, especially at seat surfaces. Replace if worn, nicked or depressed.
4. Clean flat mating surfaces of body (1) to body cap (5) shoulder. Be careful not to scratch either surface.
5. Clean debris from within the regulator body (1) cavity. Clean parts to be reused. **NOTE:** *On regulators originally supplied as "oxygen clean", Options-55, maintenance must include a level of cleanliness equal to Cashco's cleaning standard #S-1134. Contact factory for details.*
6. Reinstall a new cylinder gasket (18). Press firmly and evenly into place using the cylinder (15.2). Remove the cylinder (15.2) and inspect the pressed in cylinder gasket (18). Do not use a "homemade" cylinder gasket. Pipe sealant may be lightly coated to the gasket surfaces prior to installation, except when utilizing Option-55.
7. Reinstall the cylinder (15.2), observing that when finally setting, the cylinder (15.2) appears to be concentrically located within the body cap (5) opening.
8. Slide the piston (15.1) slowly into place, ensuring that the piston (15.1) post slides into the female groove of the pusher plate (11).
9. Place piston spring (17) into the cavity of the piston (15.1).
10. Use pipe thread sealant applied to the body cap (5) threads. Screw body cap (5) into body (1). When body cap (5) is fully down against body (1) at the body cap shoulder, use the wrench with 15" (381 mm) lever handle and a hammer to impact the body cap (5) into the body (1).
11. Bench test for suitable operation. **NOTE:** *Regulators are not tight shutoff devices. Even if pressure builds up beyond setpoint, a regulator may or may not develop bubble tight shutoff. In general, tighter shutoff can be expected with a composition seat.*
12. Soap solution test around body cap (5) and body (1) for leakage. Test pressure should be a minimum of 100 psig (6.9 Barg) at the inlet.

D. Trim Replacement (For Composition Seated Units):

Follow the same steps as listed under "Trim Replacement for Metal Seated Units", except for the following guidelines:

1. When inspecting parts for excessive wear (C.3) ensure there are no foreign particles embedded in the TFE seat. Inspect for nicks. Inspect the backup ring (27) and quad ring (26) on piston post.
2. After removing the body cap (5) (C.4), inspect the inside surface of the body cap for scratches or nicks. These could result in leakage past the quad ring (26) and backup ring (27). If worn or scratched replace the body cap (5).
3. Remove the body cap O-ring (25) and clean contacting surface of body (1).



CAUTION

When piston (15) assemblies are used with composition seats, Cashco does not recommend attempting to remove the composition seat, as it is retained by the piston's post being force pressed into the lower cylinder section, and the outer (OD) edge of the composition seat is retained by the piston's thinned wall being forcefully crimped into the composition seat material (bent over and into). If composition seat is damaged, replace entire piston assembly.

E. Special Instructions for Diaphragm Replacement:

1. For the Option -1+6 Differential Construction, reassemble the diaphragm subassembly in Sub-Section B. Step 9.
2. For metal diaphragm(s) (12) only, install a second diaphragm gasket (13) on the top side of the diaphragm (4). **NOTE:** *Clean the diaphragm flange area of the spring chamber (2) thoroughly before assembly.*
3. Utilize a new lock nut seal (22) when installing the adjusting screw (13) and locknut (14).
4. Install new closing cap gasket (21), reinstall closing cap (20).



CAUTION

Option-1+6 contains single diaphragm construction. In the event of diaphragm failure, the process fluid will mix with the loading fluid. Please alert your representative so an alternative product can be selected.

SECTION VII

VII. TROUBLE SHOOTING GUIDE

1. Erratic operation; chattering.

Possible Causes	Remedies
A. Oversized regulator; inadequate rangeability.	A1. Check actual flow conditions, resize regulator for minimum and maximum flow. A2. Increase flow rate. A3. Decrease regulator pressure drop; decrease inlet pressure by placing a throttling orifice in inlet piping union. A4. Install next step higher range spring. Contact factory. A5. Before replacing regulator, contact factory.
B. Worn piston, inadequate guiding	B. Replace trim.
C. Weakened/broken piston spring.	C. Replace piston spring. Determine if corrosion is causing the failure; if so, then consider NACE acceptable trims.

2. Downstream pressure will not reach desired setting.

Possible Causes	Remedies
A. Regulator undersized.	A1. Confirm by opening bypass valve together with regulator. A2. Check actual flow conditions, resize regulator; if regulator has inadequate capacity, replace with larger unit. A3. Decrease regulator pressure drop; decrease inlet pressure by placing a throttling orifice in inlet piping union. A4. Install next step higher range spring. Contact factory. A5. Before replacing regulator, contact factory.
B. Plugged trim.	B. Remove trim and check for plugged holes in cylinder.
C. Incorrect range spring (screwing in CW of adjusting screw does not allow bringing pressure level up to proper level).	C. Replace range spring with proper higher range. Contact factory.
D. Too much proportional band (droop).	D1. Review P.B. (droop) expected. D2. Contact factory.
E. Restricted diaphragm movement.	E. Ensure no moisture in spring chamber at temperatures below freeze point. Ensure no dust or debris entering vent opening. If rainwater or debris can enter, reorient spring chamber.

3. Leakage through the spring chamber vent hole.

Possible Causes	Remedies
A. Normal-life diaphragm failure.	A. Replace diaphragm.
B. Abnormal short-life diaphragm failure.	B1. Can be caused by excessive chattering. See No. 1. to remedy chatter. B2. Can be caused by corrosive action. Consider alternate diaphragm material. B3. For composition diaphragms, ensure not subjecting to over-temperature conditions. B4. Downstream (outlet) pressure buildup occurring that overstresses diaphragms. Relocate regulator or protect with safety relief valve.

4. Excessive pressure downstream.

Possible Causes	Remedies
A. Regulator not closing tightly.	A1. Inspect the seating. Clean and lap metal seat surfaces; replace if lapping does not remedy. If composition seats are depressed, nicked or embedded with debris, replace trim. A2. Inspect guides in body cap (balanced trim). If damaged, replace body cap and/or piston.
B. Downstream block.	B. Check system; isolate (block) flow at regulator inlet - not outlet. Relocate regulator if necessary.
C. No pressure relief protection.	C. Install safety relief valve, or rupture disc.
D. Restricted diaphragm movement.	D. Ensure no moisture in spring chamber at temperatures below freeze point. Ensure no dust or debris entering vent opening. If rainwater or debris can enter, re-orient regulator.

5. Sluggish operation.

Possible Causes	Remedies
A. Plugged spring chamber vent.	A. Clean vent opening.
B. Plugged piston balance port.	B. Remove trim and clean balance port.
C. Fluid too viscous.	C. Heat fluid. Contact factory.

6. Excessive Seat Leakage.

Possible Causes	Remedies
A. Foreign matter on seating surface, erosion of seating surface, scratched body cap.	A. Inspect and replace damaged parts.

SECTION VIII

VIII. ORDERING INFORMATION NEW REPLACEMENT UNIT vs PARTS "KIT" FOR FIELD REPAIR

To obtain a quotation or place an order, please retrieve the Serial Number and Product Code that was stamped on the metal name plate and attached to the unit. This information can also be found on the Bill of Material ("BOM"), a parts list that was provided when unit was originally shipped. (Serial Number typically 6 digits). Product Code typical format as follows: (last digit is alpha character that reflects revision level for the product).

□□□□ - □□□□ 7 - □□□□□□□□□□

NEW REPLACEMENT UNIT:

Contact your local Cashco Sales Representative with the Serial Number and Product code. With this information they can provide a quotation for a new unit including a complete description, price and availability.

PARTS "KIT" for FIELD REPAIR:

Contact your local Cashco Sales Representative with the Serial Number and Product code. Identify the parts and the quantity required to repair the unit from the "BOM" sheet that was provided when unit was originally shipped.

NOTE: *Those part numbers that have a quantity indicated under "Spare Parts" in column "A" reflect minimum parts required for inspection and rebuild, - "Soft Goods Kit". Those in column "B" include minimum trim replacement parts needed plus those "Soft Goods" parts from column "A".*

If the "BOM" is not available, refer to the cross-sectional drawings included in this manual for part identification and selection.

A Local Sales Representative will provide quotation for appropriate Kit Number, Price and Availability.

CAUTION

Do not attempt to alter the original construction of any unit without assistance and approval from the factory. All purposed changes will require a new name plate with appropriate ratings and new product code to accommodate the recommended part(s) changes.

The contents of this publication are presented for informational purposes only, and while every effort has been made to ensure their accuracy, they are not to be construed as warranties or guarantees, express or implied, regarding the products or services described herein or their use or applicability. We reserve the right to modify or improve the designs or specifications of such product at any time without notice. Cashco does not assume responsibility for the selection, use or maintenance of any product. Responsibility for proper selection, use and maintenance of any Cashco product remains solely with the purchaser.

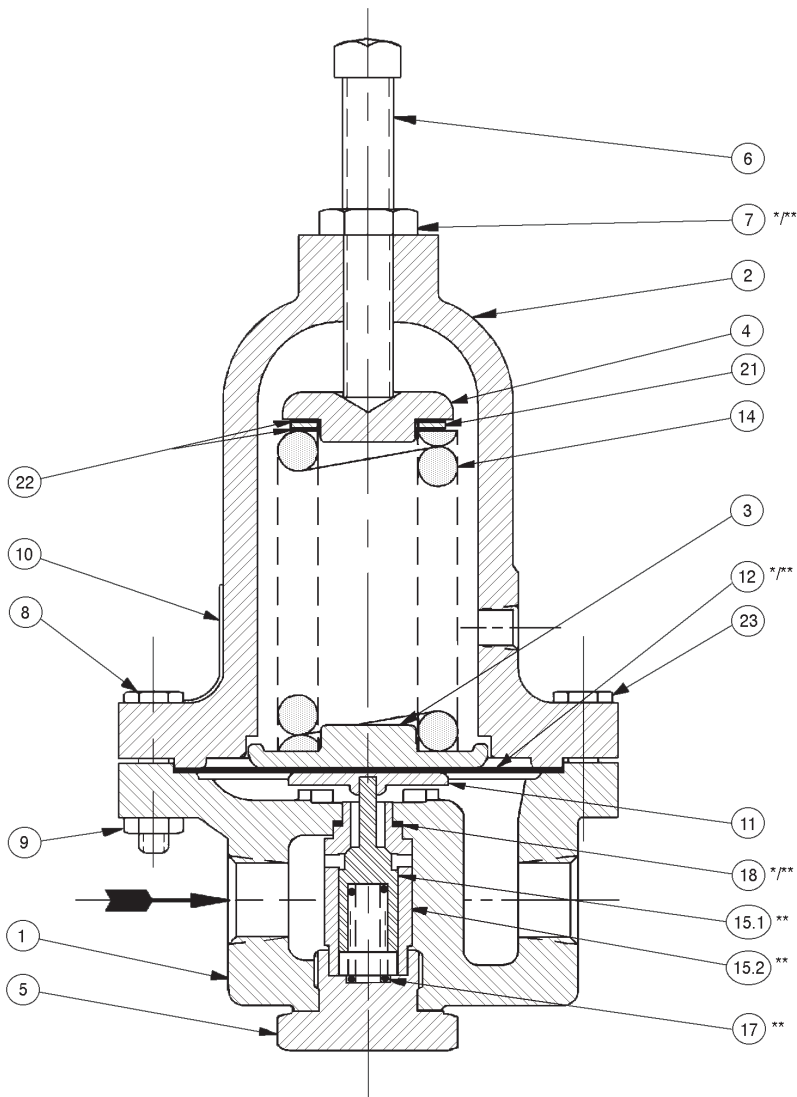


FIGURE 1
Model HP – Metal Seat

Item No.	Description	Repair Parts	
		Kit A	Kit B
1	Body		
2	Spring Chamber		
3	Pressure Plate		
4	Spring Button		
5	Body Cap		
6	Adjusting Screw		
7	Sealing Lock Nut	*	**
8	Flange Bolt		
9	Flange Bolt Nut		
10	Name Plate		
11	Pusher Plate		
12	Diaphragm	*	**
14	Range Spring		
15	Piston/Comp Seat		**
15.1	Piston - Metal		**
15.2	Cylinder - Metal		**
16	Cylinder – Comp		**
17	Piston Spring		**
18	Cylinder Gasket	*	**
21	Thrust Bearing		
22	Bearing Washer		
23	Flange Bolt (No Nut)		
25	Body Cap O-Ring	*	**
26	Quad Ring	*	**
27	Backup Ring	*	**

Items Not Shown

13	Diaphragm Gasket used only with metal diaphragm(s)	*	**
24	Diaphragm Ring (1-1/2" size only)		
28	Closing Cap		
29	Closing Cap Gasket	*	**

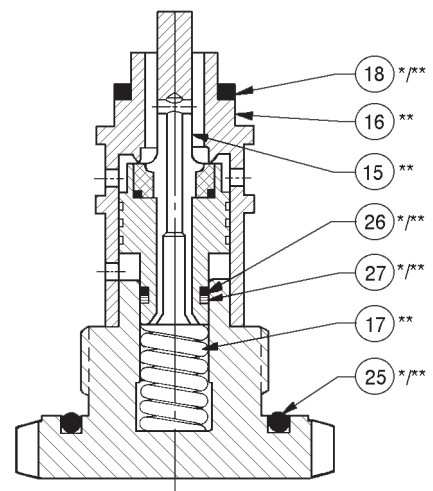


FIGURE 2
Balanced Composition Seat



IOM ADDENDUM:

ATEX DIRECTIVE 2014/34/EU and THE EQUIPMENT AND PROTECTIVE SYSTEMS INTENDED FOR USE IN POTENTIALLY EXPLOSIVE ATMOSPHERES REGULATIONS 2016

Cashco declares that the products listed in the table below has been found to comply with the Essential Health and Safety Requirements relating to the design and construction of products intended for use in potentially explosive atmospheres given in Annex II of the ATEX Directive 2014/34/EU and given in Schedule 1 of The Equipment and Protective Systems Indented for Use in Potentially Explosive Atmospheres Regulations 2016. Compliance with the Essential Health and Safety Requirements has been assured by compliance with EN ISO 80079-36:2016 and EN ISO 80079-37:2016. The product will be marked as follows:



The 'X' placed after the technical file number indicates that the product is subject to specific conditions of use as follows:

1. The maximum surface temperature depends entirely on the operating conditions and not the equipment itself. The combination of the maximum ambient and the maximum process medium temperature shall be used to determine the maximum surface temperature and corresponding temperature classification, considering the safety margins described prescribed in EN ISO 80079-36:2016, Clause 8.2. Additionally, the system designer and users must take precautions to prevent rapid system pressurization which may raise the surface temperature of system components and tubing due to adiabatic compression of the system gas. Furthermore, the Joule-Thomson effect may cause process gases to rise in temperature as they expand going through a regulator. This could raise the external surface temperature of the regulator body and the downstream piping creating a potential source of ignition. Whether the Joule-Thomson effect leads to heating or cooling of the process gas depends on the process gas and the inlet and outlet pressures. The system designer is responsible for determining whether the process gas temperature may raise under any operating conditions.
2. Where the process medium is a liquid or semi-solid material with a surface resistance in excess of $1G\Omega$, special precautions shall be taken to ensure the process does not generate electrostatic discharge.
3. Special consideration shall be made regarding the filtration of the process medium if there is a potential for the process medium to contain solid particles. Where particles are present, the process flow shall be $<1\text{m/s}$ ($<3.3\text{ft/s}$) in order to prevent friction between the process medium and internal surfaces.
4. Effective earthing (grounding) of the product shall be ensured during installation.
5. The valve body/housing shall be regularly cleaned to prevent build up of dust deposits.
6. Regulators must be ordered with the non-relieving option (instead of the self-relieving option) if the process gas they are to be used with is hazardous (flammable, toxic, etc.). The self-relieving option vents process gas through the regulator cap directly into the atmosphere while the non-relieving option does not. Using regulators with the self-relieving option in a flammable gas system could create an explosive atmosphere in the vicinity of the regulator.
7. Tied diaphragm regulators with outlet ranges greater than 7 barg (100 psig) should be preset to minimize the risk that improper operation might lead to an outboard leak and a potentially explosive atmosphere.
8. All equipment must only be fitted with manufacturer's original spare parts.
9. Ensure that only non-sparking tools are used, as per EN 1127-1, Annex A.

	PRODUCT
REGULATORS	31-B, 31-N
	1164, 1164(OPT-45)
	1171, 1171(OPT-45), 1171(CRYO)
	2171, 2171(OPT-45), 2171(CRYO), 3171
	1465, 3381, 3381(OPT-45), 3381(OPT-40)
	4381, 4381(OPT-37), 4381(CRYO), 4381(OPT-45), 5381
	MPRV-H, MPRV-L
	PBE, PBE-L, PBE-H
	CA-1, CA-2
	CA1, SA1, CA4, SA4, CA5, SA5
	DA2, DA4, DA5, DA6, DA8
	DA0, DA1, DAP, SAP
	SLR-1, SLR-2, PTR-1
	ALR-1, ULR-1, PGR-1
	BQ, BQ(OPT-45), BQ(CRYO)
	123, 123(CRYO), 123(OPT-45), 123(OPT-46G)
	123-1+6, 123-1+6(OPT-45), 123-1+6(OPT-46G), 123-1+6+S, 123-1+6+S(OPT-40)
	1000HP, 1000HP(OPT-37), 1000HP(OPT-45), 1000HP(OPT-45G), 1000HP(CRYO)
	1000HP-1+6, 1000HP-1+8, 1000LP, 1000LP(OPT-45), 1000LP(OPT-46G)
	6987
	8310HP, 8310HP-1+6, 8310HP-1+8, 8310LP, 8311HP, 8311LP
	345, 345(OPT-45)
	BA1/BL1, PA1/PL1
	C-BPV, C-PRV, C-CS
	D, D(CRYO), D(OPT-37), D(OPT-20), D(OPT-45)
	DL, DL(LCC), DL(OPT-45)
	BR, BR(CRYO)
	HP, HP(LCC), HP(OPT-45), HP(OPT46G), HP-1+6+S(OPT-40), HP-1+6+S
	P1, P2, P3, P4, P5, P7
	B2, B7
	POSR-1, POSR-2
	5200P, 5300P
135	
NW-PL, NW-SO	
CG-PILOT	
FG1	
CONTROL VALVES	RANGER, 987, PREMIER
	964, 521, 988, 988-MB, 989
	2296/2296HF
	SCV-30, SCV-S
TANK BLANKETING	8700, 8910, 8920, 8930, 8940
	2100, 2199
	3100, 3200, 3300, 3400, 3500, 3600, 3700
	1078, 1088, 1100, 1049
	5100, 5200, 5400, 5500
4100, 4200, 4300, 4400, 4500, 4600	
MISC	764P/PD, 764-37, 764T

Cashco
P.O. Box 6
Ellsworth, KS 67439-0006
PH (785) 472-4461
Fax. # (785) 472-3539
www.cashco.com
email: sales@cashco.com
Printed in U.S.A. IOM-HP

Cashco GmbH
Handwerkerstrasse 15
15366 Hoppegarten, Germany
PH +49 3342 30968 0
Fax. No. +49 3342 30968 29
www.cashco.com
email: germany@cashco.com

Cashco do Brasil, Ltda.
Al.Venus, 340
Indaiatuba - Sao Paulo, Brazil
PH +55 11 99677 7177
Fax. No.
www.cashco.com
email: brazil@cashco.com